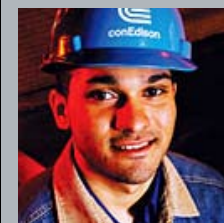




I'M MIT



I'M MIT

We came to MIT because we

# BELIEVE

creativity is as essential as knowledge,  
passion is the key to progress, and  
our greatest challenges are also our  
greatest opportunities.



## I'M MIT

Sadik Antwi-Boampong '09  
the son of a librarian, recently  
established the first library in an  
underprivileged town in Ghana.

"Africa is ravaged by disease and  
hunger and is so behind. What  
I've learned is that it's possible  
to make a difference in society  
with the few resources you  
have."

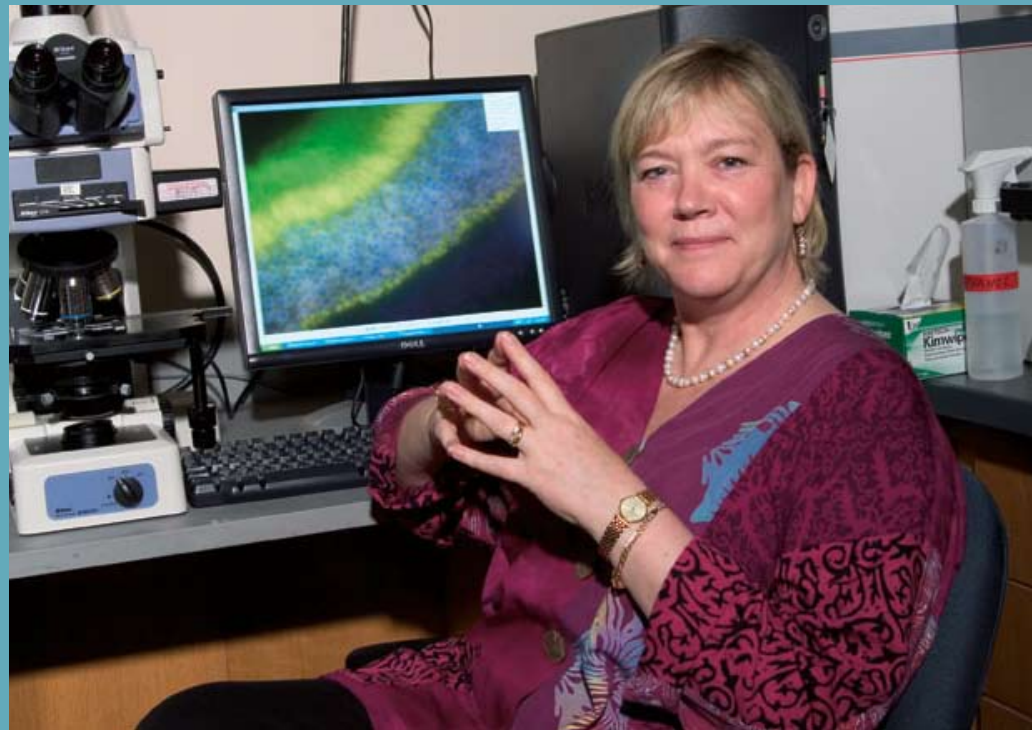
Find the whole story on line at:  
<http://spectrum.mit.edu/>  
search for: establishing a library

## I'M MIT

An expert on the subject of DNA repair, Professor Leona Samson is also exploring gene reactions that may help oncologists determine which chemotherapy treatment is most likely to be effective for a specific patient.

“You can imagine a situation where you’d sample tumor cells and be able to say, ‘Okay, this person’s tumor won’t respond to this chemotherapeutic agent, but it will respond to that one.’”

Find the whole story on line at:  
[http://spectrum.mit.edu/  
search for: revealing DNA](http://spectrum.mit.edu/search?for=revealing+DNA)



We are the  
**FABRIC**  
that makes MIT what it is today:

an institute of learning and doing,  
a wellspring of breakthrough research  
and educational innovation,  
and the originator of solutions to  
safeguard our society and our planet.

We are the  
**HUMAN**  
factor that sustains MIT,

nurturing and encouraging our  
exceptional students,

supporting our mission  
and our role as a crucial resource,

and advancing MIT as a vital agent  
of change in the world today.



## I'M MIT

Mark Gorenberg '76 has recently provided substantial support for brain research, student scholarships, and entrepreneurial ventures at MIT.

“MIT had a huge influence on my life and my career. I felt that MIT deserved for me to return the gift.”

Find the whole story on line at:  
<http://spectrum.mit.edu/>  
search for: returning the gift



Susan Hockfield, MIT President

We are all MIT, and our  
**PARTICIPATION**  
matters.

This campaign is our chance to affirm our belief in MIT and its current priorities—through unrestricted giving, support for the MIT Energy Initiative, support for emerging research, and particularly through support for our students. They are our lifeblood and our future; without them, the Infinite Corridor is just a hallway.

I'M MIT

*the*  
**PARTICIPATION**  
FACTOR

name

address

email

**my gift:**

- enclosed is my check (payable to MIT)
- charge my credit card (AmEx, VISA, MasterCard)

account number

expiration date

**in support of:**

- unrestricted—open to use for any purpose
- undergraduate scholarships
- graduate fellowships—specify dept: \_\_\_\_\_
- MIT's energy initiative
- other: \_\_\_\_\_

Make your gift online at: <http://giving.mit.edu/participation/>